



## Tubulin $\beta$ monoclonal antibody

货号: QS04024

### BackGround:

Microtubules are constituent parts of the mitotic apparatus, cilia, flagella, and elements of the cytoskeleton. They consist principally of 2 soluble proteins, alpha- and beta-tubulin, each of about 55,000 Da. Antibodies against beta Tubulin are useful as loading controls for Western Blotting. However it should be noted that levels of beta Tubulin may not be stable in certain cells.

### Product:

1mg/ml in PBS with 0.02% sodium azide, 50% glycerol, pH7.2

### Molecular Weight:

~ 55 kDa

### Swiss-Prot:

Q13509/P04350/P68371/P07437/Q13885/Q9BUF5

### Purification & Purity:

The antibody was affinity-purified from mouse ascites by affinity-chromatography using epitope-specific immunogen and the purity is > 95% (by SDS-PAGE).

### Applications:

WB: 1:5000~20000 IHC: 1:100~500 IF: 1:100~500 IP: 1:100~500

### Storage & Stability:

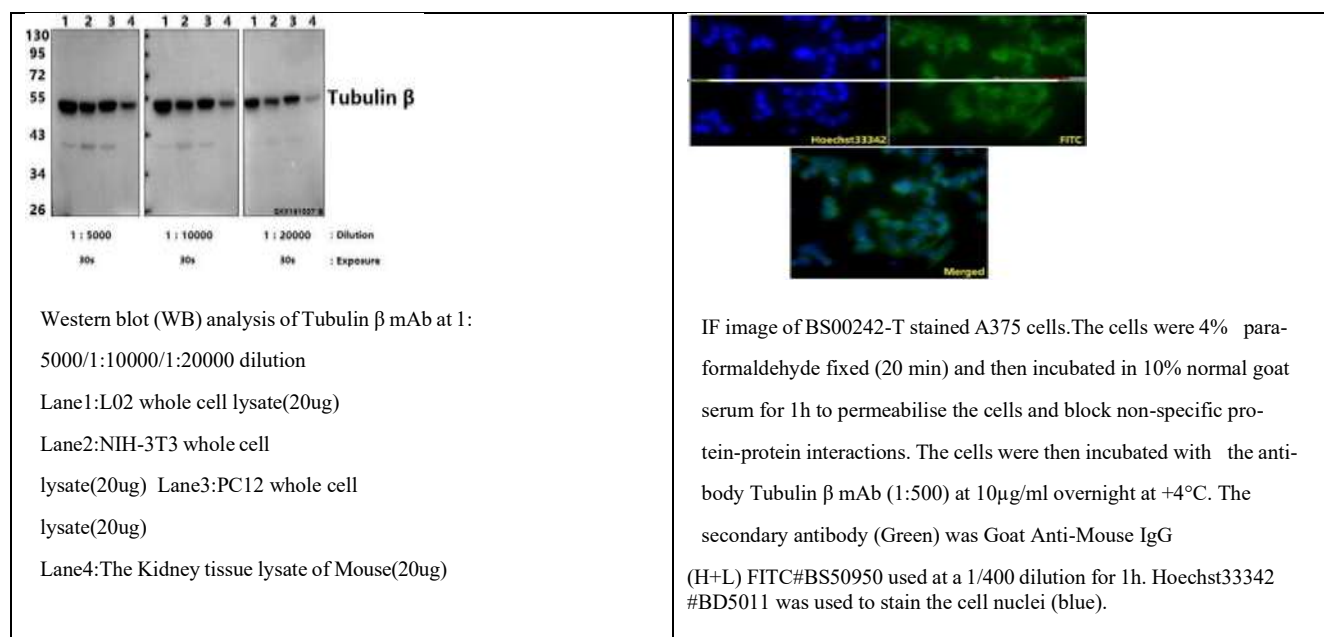
Store at 4°C short term. Aliquot and store at -20°C longterm. Avoid freeze-thaw cycles.

### Specificity:

Tubulin  $\beta$  mAb detects endogenous levels of  $\beta$ -Tubulin protein.



## DATA:



## Note:

For research use only, not for use in diagnostic procedure.