



GM130 Rabbit monoclonal antibody

货号: QS04084 宿主: 兔 反应物种: 人, 小鼠, 大鼠, 猴子, 牛, 狗
Catalog: QS04084 Host: Rabbit Reactivity: Human, Mouse, Rat, Monkey, Cow, Dog

研究背景 Background:

高尔基体自身抗原;可能参与维持顺式高尔基体结构。高尔基体参与分泌途径中蛋白质和脂质的糖基化和转运,由一系列堆叠的蓄水池(扁平的膜囊)组成。高尔基体和微管之间的相互作用被认为对高尔基体在有丝分裂过程中碎裂后的重组很重要。该基因编码一种高尔基体蛋白,一个定位于高尔基体的蛋白质家族。

Golgi autoantigen; probably involved in maintaining cis-Golgi structure. The Golgi apparatus, which participates in glycosylation and transport of proteins and lipids in the secretory pathway, consists of a series of stacked cisternae (flattened membrane sacs). Interactions between the Golgi and microtubules are thought to be important for the reorganization of the Golgi after it fragments during mitosis. This gene encodes one of the golgins, a family of proteins localized to the Golgi.

产品 Product:

兔IgG, 1mg/mL的PBS溶液(含0.02%叠氮化钠, 50%甘油, pH7.2)。
Rabbit IgG, 1mg/mL in PBS with 0.02% sodium azide, 50% glycerol, pH7.2

分子量 Molecular Weight:

~ 125 kDa

Swiss-Prot:

Q08379

提纯和纯度 Purification & Purity:

亲和层析。

Affinity-chromatography.

应用 Applications:

WB: 1:500~1:2000

IHC: 1:50~1:200

ICC/IF: 1:50~1:200

IP: 1:50

存储和稳定性 Storage & Stability:

在4°C下短期储存。分装并在-20°C下长期储存。避免反复冻融。

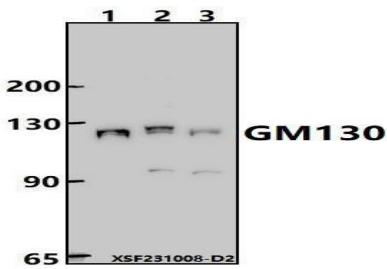
Store at 4°C short term. Aliquot and store at -20°C long term. Avoid freeze-thaw cycles.

特异性 Specificity:

GM130 Antibody 可检测 GM130 总的内源水平。

GM130 Antibody detects endogenous levels of total GM130.

数据 DATA:



1: 500 稀释度的组蛋白 H3 (R2) 多克隆抗体的蛋白质印迹 (WB) 分析

Western blot (WB) analysis of GM130 Rabbit monoclonal antibody at 1:500 dilution

泳道1: Hela全细胞裂解液 (30 μ g)

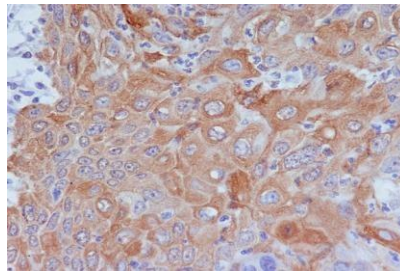
泳道2: MCF-7全细胞裂解液 (30 μ g)

泳道3: HEK293T全细胞裂解液 (30 μ g)

Lane1:Hela whole cell lysate(30 μ g)

Lane2:MCF-7 whole cell lysate(30 μ g)

Lane3:HEK293T whole cell lysate(30 μ g)



使用 GM130 Antibody 对石蜡包埋的人宫颈癌瘤进行免疫组织化学分析。

Immunohistochemical analysis of paraffin-embedded human cervix carcinoma, using GM130 Antibody.

备注 Note:

仅供研究使用，不得用于诊断实验。

For research use only, not for use in diagnostic procedure.