



## p21 (FL) polyclonal antibody

Catalog: QS04113

Host: Rabbit

Reactivity: Human, Mouse, Rat

### BackGround:

It is now well established that cyclins play a positive role in promoting cell cycle transitions via their ability to associate with and activate their cognate cyclin-dependent kinases (Cdks). Cdk2 associates with cyclins A, D and E, and has been implicated in the control of the G1 to S phase transition in mammals. A novel Cdk-interacting protein, designated p21, Cip1 or WAF1, has been identified in cyclin A, cyclin D1, cyclin E and Cdk2 immunoprecipitates. p21 is a potent, tight-binding inhibitor of Cdks and can inhibit the phosphorylation of Rb by cyclin A-Cdk 2, cyclin E-Cdk2, cyclin D1-Cdk4 and cyclin D2-Cdk4 complexes. Expression of p21 is inducible by wildtype, but not mutant, p53. The mouse homolog of p21 is designated CAP20.

### Product:

Rabbit IgG in PBS with 0.02% sodium azide, 50% glycerol, pH7.2

### Molecular Weight:

~ 21 kDa

### Swiss-Prot:

P38936

### Purification&Purity:

The antibody was affinity-purified from rabbit antiserum by affinity-chromatography using epitope-specific immunogen and the purity is > 95% (by SDS-PAGE).

### Applications:

WB 1:1000 - 1:2500 IHC 1:25 - 1:100

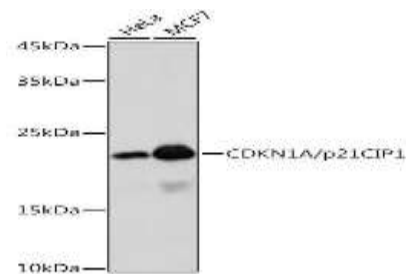
### Storage&Stability:

Store at 4°C short term. Aliquot and store at -20°C long term. Avoid freeze-thaw cycles.

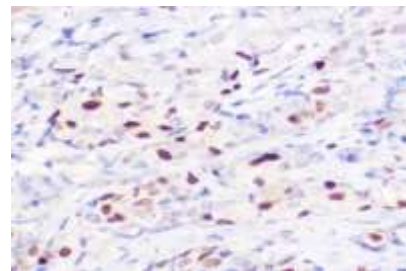
### Specificity:

p21 (FL) polyclonal antibody detects endogenous levels of p21 protein.

### DATA:



Western blot analysis of p21 (FL) polyclonal antibody



### Note:

For research use only, not for use in diagnostic procedure.