



NLRP3 polyclonal antibody

Catalog: QS04124 Host: Rabbit Reactivity: Human, Mouse, Rat

Background:

This gene encodes a pyrin-like protein containing a pyrin domain, a nucleotide-binding site (NBS) domain, and a leucine-rich repeat (LRR) motif. This protein interacts with the apoptosis-associated speck-like protein PY- CARD/ASC, which contains a caspase recruitment domain, and is a member of the NALP3 inflammasome complex. This complex functions as an upstream activator of NF-kappaB signaling, and it plays a role in the regulation of inflammation, the immune response, and apoptosis. Mutations in this gene are associated with familial cold autoinflammatory syndrome (FCAS), Muckle-Wells syndrome (MWS), chronic infantile neurological cutaneous and articular (CINCA) syndrome, and neonatal-onset multisystem inflammatory disease (NOMID). Multiple alternatively spliced transcript variants encoding distinct isoforms have been identified for this gene. Alternative 5' UTR structures are suggested by available data; however, insufficient evidence is available to determine if all of the represented 5' UTR splice patterns are biologically valid.

Product:

Rabbit IgG in PBS with 0.02% sodium azide, 50% glycerol, pH7.2

Molecular Weight:

~ 118 kDa

Swiss-Prot:

Q96P20

Purification & Purity:

The antibody was affinity-purified from rabbit antiserum by affinity-chromatography using epitope-specific immunogen and the purity is > 95% (by SDS-PAGE).

Applications:

WB: 1:250~1:500

IHC: 1:25~1:100

IF/ICC: 1:25~1:100

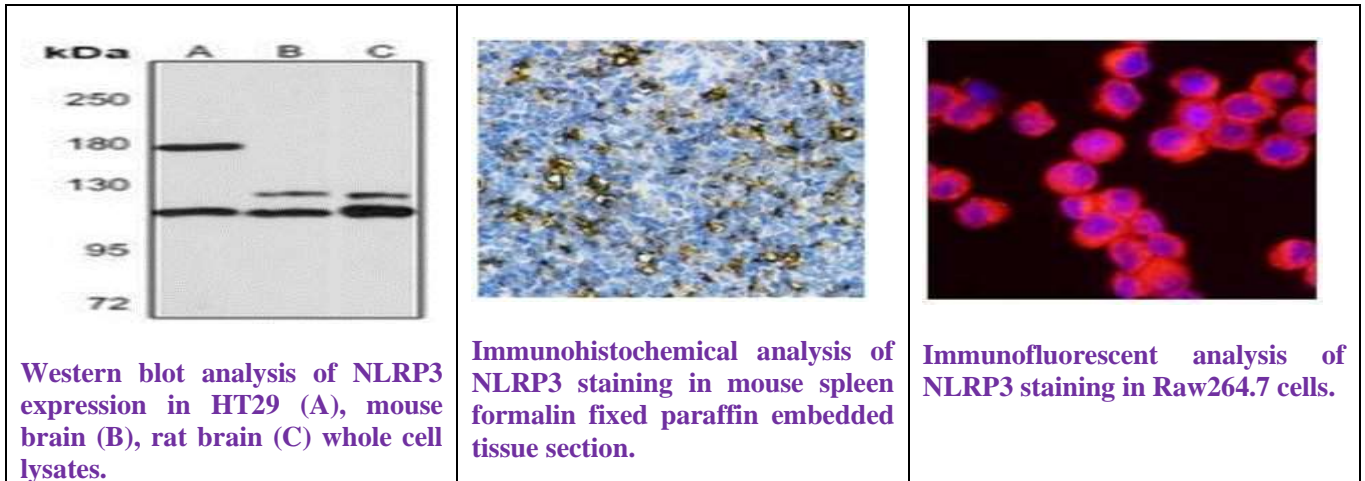
Storage & Stability:

Store at 4°C short term. Aliquot and store at -20°C long term. Avoid freeze-thaw cycles.

Specificity:

NLRP3 polyclonal antibody detects endogenous levels of NLRP3 protein.

DATA:

**Note:**

For research use only, not for use in diagnostic procedure.