



Caspase 3 (D146) polyclonal antibody

Catalog: QS04121

Host: Rabbit

Reactivity: Human, Mouse, Rat

BackGround:

Caspase 3 (also known as CPP32, YAMA and apopain) is the most extensively studied apoptotic protein among caspase family members. Caspase 3 is synthesized as inactive pro enzyme that is processed in cells undergoing apoptosis by self proteolysis and/or cleavage by other upstream proteases (e.g. Caspases 8, 9 and 10). The processed form of Caspase 3 consists of large (17kD) and small (12kD) subunits which associate to form an active enzyme. Caspase 3 is cleaved at Asp28 - Ser29 and Asp175 - Ser176. The active Caspase 3 proteolytically cleaves and activates other caspases (e.g. Caspases 6, 7 and 9), as well as relevant targets in the cells (e.g. PARP and DFF).

Product:

Rabbit IgG in PBS with 0.02% sodium azide, 50% glycerol, pH7.2

Molecular Weight:

~ 35 kDa

Swiss-Prot:

P42574

Purification&Purity:

The antibody was affinity-purified from rabbit antiserum by affinity-chromatography using epitope-specific immunogen and the purity is > 95% (by SDS-PAGE).

Applications:

WB: 1:250~1:500

IHC: 1:25~1:100

IF: 1:25~1:100

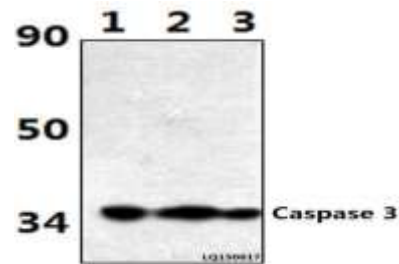
Storage&Stability:

Store at 4°C short term. Aliquot and store at -20°C long term. Avoid freeze-thaw cycles.

Specificity:

Caspase 3 (D146) polyclonal antibody detects endogenous levels of Caspase 3 protein.

DATA:

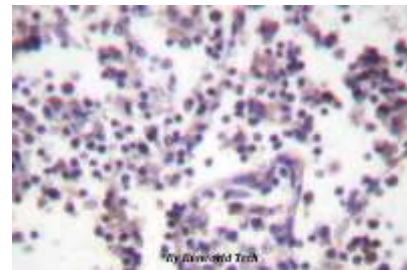


Western blot (WB) analysis of Caspase 3 (D146) polyclonal antibody at 1:500 dilution

Lane1: Hela whole cell lysate (40ug)

Lane2: Hela treated with H₂O₂ (100nmol/ml, 25min, Na₃O₄V) whole cell lysate (40ug)

Lane3: Hela treated with H₂O₂ (100nmol/ml, 25min, λ-ppase) whole cell lysate (40ug)



Immunohistochemistry (IHC) analyzes of Caspase 3 (D146) pAb in paraffin-embedded human lymph node tissue.

Note:

For research use only, not for use in diagnostic procedure.