



## Tubulin $\beta$ polyclonal antibody

Catalog: QS04023

### BackGround:

Microtubules are constituent parts of the mitotic apparatus, cilia, flagella, and elements of the cytoskeleton. They consist principally of 2 soluble proteins, alpha- and beta-tubulin, each of about 55,000 kDa. Antibodies against beta Tubulin are useful as loading controls for Western Blotting. However it should be noted that levels of beta Tubulin may not be stable in certain cells.

### Product:

Rabbit IgG, 1mg/ml in PBS with 0.02% sodium azide, 50% glycerol, pH7.2

### Molecular Weight:

~ 55 kDa

### Purification&Purity:

The antibody was affinity-purified from rabbit antiserum by affinity-chromatography using epitope-specific immunogen and the purity is > 95% (by SDS-PAGE).

### Applications:

WB: 1:5000~1:20000

IP: 1:100~500

IF: 1:500~1000

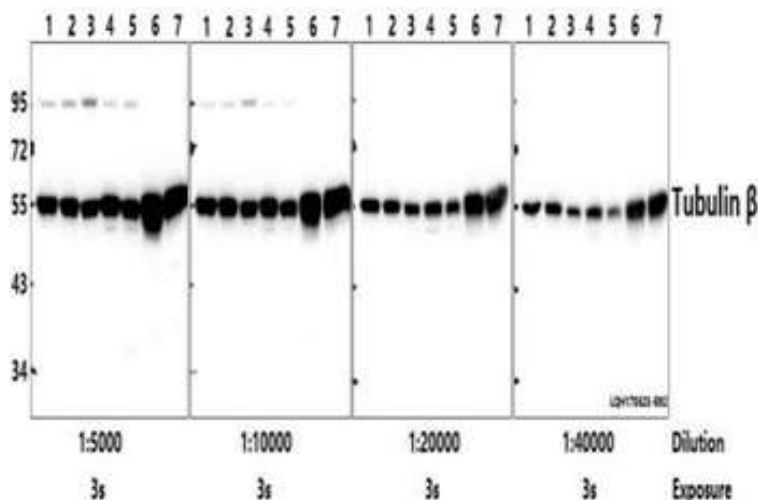
### Storage&Stability:

Store at 4°C short term. Aliquot and store at -20°C long term. Avoid freeze-thaw cycles.

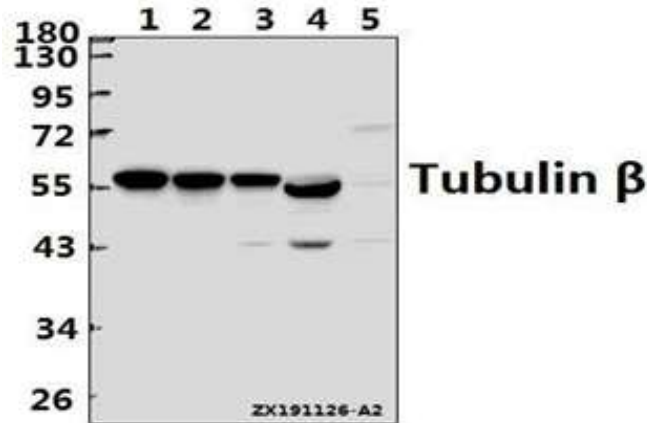
### Specificity:

Tubulin  $\beta$  polyclonal antibody pAb detects endogenous levels of Tubulin  $\beta$  protein..

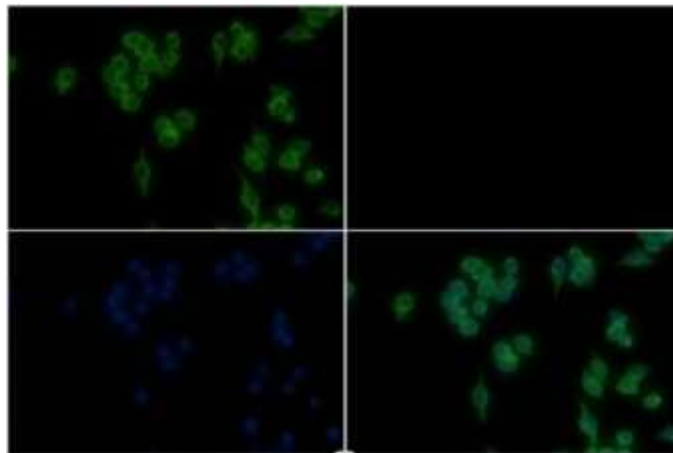
### DATA:



Western blot (WB) analysis of Tubulin  $\beta$  pAb at 1:5000/1:10000/1:20000/1:40000 dilution Lane1:L02 whole cell lysate(40ug) Lane2:A549 whole cell lysate(40ug) Lane3:MG63 whole cell lysate(40ug) Lane4:PC12 whole cell lysate(40ug) Lane5:BV2 whole cell lysate(40ug) Lane6:The Brain tissue lysate of Rat(40ug) Lane7:The Brain tissue lysate of Mouse(40ug)



Western blot (WB) analysis of Tubulin  $\beta$  pAb at 1:5000 dilution Lane1:A549 whole cell lysate(20ug) Lane2:PC12 whole cell lysate(20ug) Lane3:BV2 whole cell lysate(20ug) Lane4:The Kidney tissue lysate of Mouse(20ug) Lane5:The Prostate tissue lysate of Rat(20ug)



Immunofluorescence analysis of RAW264.7 cells using Tubulin  $\beta$  pAb at dilution of 1:1000 (40x lens). Immunoprecipitation of MCF-7 cell lysates using Tubulin  $\beta$  pAb (Sepharose Bead Conjugate)#BD0048 (lane 2 and lane 3).Lane 1 is 30% input. The western blot was probed using Tubulin  $\beta$  mAb.

**Note:**

For research use only, not for use in diagnostic procedure.