



## Calnexin monoclonal antibody

**Catalog:** QS04017

**Host:** Rabbit

**Quantity:** 25 $\mu$ L/50 $\mu$ L /100 $\mu$ L/200 $\mu$ L

### Description

Calnexin is a calcium-binding protein embedded in the ER membrane that retains the newly synthesized **glycol** proteins inside the ER to ensure proper folding and quality control (3-5). The specificity of calnexin for a subset of glycoproteins is defined by a lectin site, which binds an early oligosaccharide intermediate on the folding glycoprotein.

### Product:

50mM Tris-Glycine(pH 7.4), 0.15M NaCl, 40% Glycerol, 0.01% Sodium azide and 0.05% BSA

### Molecular Weight:

Calculated MW: 68 kDa; Observed MW: 90 kDa

### Swiss-Prot:

P27824

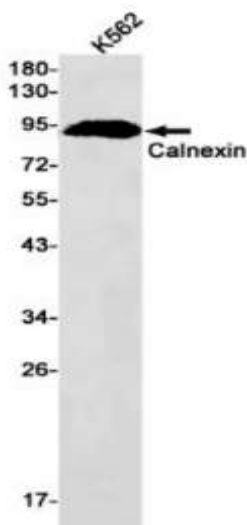
### Purification & Purity:

Affinity-chromatography

### Applications:

WB: 1:500~1:1000

### DATA:



Western blot analysis of Calnexin in K562 lysates using Calnexin antibody

### Storage & Stability:

Store at 4°C short term. Aliquot and store at -20°C long term. Avoid freeze-thaw cycles.

### Note:

For research use only, not for use in diagnostic procedure.